

VIA QUADRIO 17, MILAN



| | | |
|-----------------------------|---------------------------|------------------------|
| TOTAL AVAILABLE AREA | 12,000 sqm | |
| ASKING RENT | 500€/sqm/year + VAT | |
| AVAILABILITY | Q2/2023 | |
| GRADE | A | |
| GENERAL FEATURES | CAT A delivery conditions | False ceiling |
| | Reception | Car parks: n.122 units |
| COMMENTS | Raising floor | |
| | Minimum demise: 4,000sqm | |
| | LEED Gold | |



Public transport



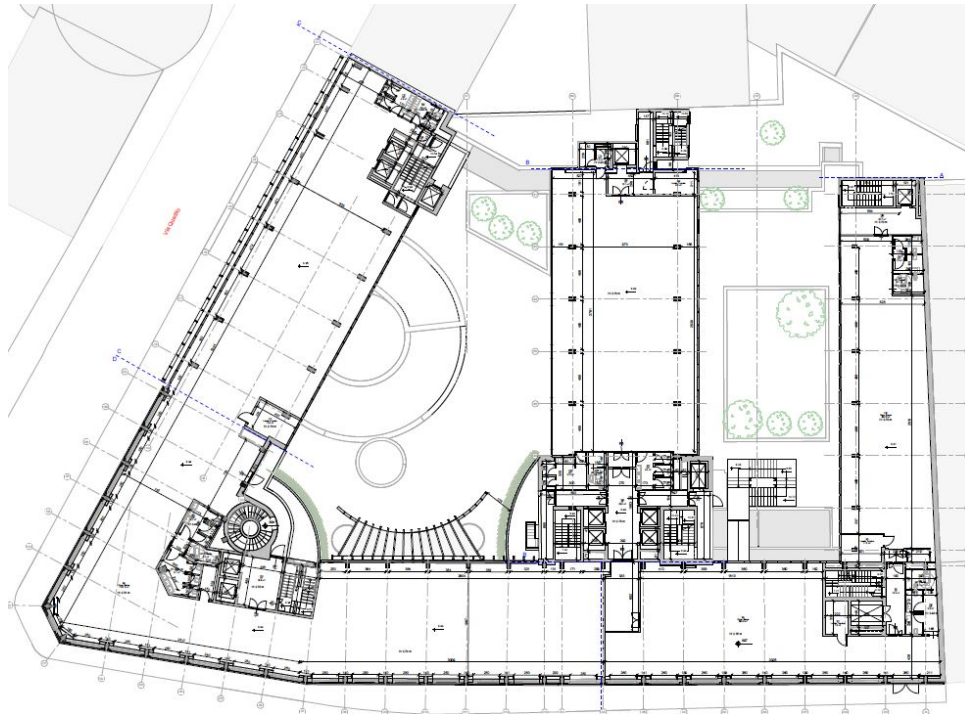
Metropolitana

- MM2 - Garibaldi
- MM5 - Garibaldi
- MM5 - Monumentale



Stazione Ferroviaria

- Porta Garibaldi



| Floor | Available area (sqm) | Asking rent (€/sqm/yr) |
|-------|----------------------|------------------------|
| -2 | 345 | Archives |
| -1 | 172 | Archives |
| 0 | 1.283 | Offices |
| 1 | 2.583 | Offices |
| 2 | 2.656 | Offices |
| 3 | 2.255 | Offices |
| 4 | 1.441 | Offices |
| 5 | 593 | Offices |
| 6 | 593 | Offices |
| 7 | 589 | Offices |